

CREDIT OPINION

30 September 2024

Update

Send Your Feedback

Contacts

Manoj Jethani +1.212.553.1048
VP-Sr Credit Officer
manoj.jethani@moodys.com

Jeffrey Montoya, CFA +1.212.553.6885
Ratings Associate
jeffrey.montoya@moodys.com

Scott Robinson, CFA +1.212.553.3746
Associate Managing Director
scott.robinson@moodys.com

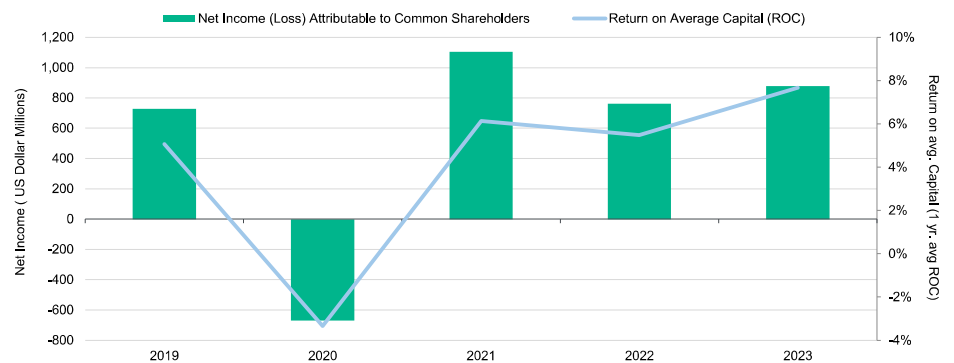
Marc R. Pinto, CFA +1.212.553.4352
MD-Financial Institutions
marc.pinto@moodys.com

Pacific Mutual Holding Company

Diverse profitability, good capital and solid market position

Our credit view of Pacific Mutual Holding Company (unrated), Pacific LifeCorp (A3 senior debt, stable) and its US affiliated subsidiaries, Pacific Life Insurance Company and Pacific Life & Annuity Company (collectively Pacific Life, Aa3 IFS, stable), reflects the group's solid market position, strong capitalization, good risk management and diverse distribution of products and earnings both in the US and internationally. In the US, Pacific Life's market share reflects top-tier position in sale of life insurance, annuities and structured settlement products. Internationally, in the UK, Ireland and Australia, the company has had growing market share and now holds a presence in 9 countries in Asia. Overall, for Pacific Life, these strengths are partially offset by risks arising from its legacy variable annuity (VA) business' sensitivity to capital market movements, specifically with respect to earnings from movement in interest rates, which is not yet fully hedged on an economic basis, while we do note that the company has been actively adding interest rate hedges to mitigate against the potential volatility. While we view Pacific Life's investment portfolio as diverse and generally high-quality, the company could face elevated losses in a stress scenario from an above industry concentration in lower quality investment-grade fixed income securities (i.e. Baa-rated bonds currently represent 46% of total bonds) and commercial mortgage loans (15% of investments), particularly to those with a greater exposure to office and select retail (e.g. malls).

Exhibit 1
Net income should benefit from higher net investment income although equity market volatility could pressure fee income



Source: Moody's Ratings and company filings

Credit strengths

- » Established market positions in the high-end life insurance markets;
- » Broad and balanced independent distribution;
- » Good capitalization with a NAIC company action level (CAL) Risk-Based Capital (RBC) ratio of 508% as of year-end 2023.

Credit challenges

- » Managing volatility in capital and earnings from capital market movements, especially interest rates;
- » Strong competition in core affluent business and professional life insurance markets;
- » Above-average exposure to Baa-rated bonds (46% of total bonds as of YE 2023).

Outlook

The outlook on Pacific Life is stable, reflecting strong market position, very good statutory capitalization and a commitment to its mutual philosophy (i.e., focus on policyholder value). Going forward, items to watch for include new business sales as well as the uncertainty in the commercial real estate assets, especially tied to office sub-sector.

Factors that could lead to an upgrade

- » Reduced capital and earnings sensitivity to capital market movements;
- » GAAP return on capital consistently greater than 8%;
- » Financial leverage below 15% (excluding AOCI); and
- » Earnings coverage consistently above 8x.

Factors that could lead to a downgrade

- » NAIC company action level RBC ratio falls below 400% (adjusting for captives) and/or lack of organic statutory capital generation;
- » GAAP return on capital less than 6%;
- » Financial leverage greater than 20% (excluding AOCI); or
- » Earnings coverage below 6x.

This publication does not announce a credit rating action. For any credit ratings referenced in this publication, please see the issuer/deal page on <https://ratings.moody's.com> for the most updated credit rating action information and rating history.

Key indicators

Exhibit 2

Pacific Mutual Holding Company [1][2]	2023	2022	2021	2020	2019
As Reported (US Dollar Millions)					
Total Assets	217,386	199,324	209,486	190,672	171,473
Total Shareholders' Equity	9,767	6,728	17,005	17,452	16,055
Net Income (Loss) Attributable to Common Shareholders	875	763	1,102	(671)	725
Total Revenue	14,802	13,360	13,936	10,062	10,747
Moody's Adjusted Ratios					
High Risk Assets % Shareholders' Equity (ex AOCI)	106.3%	102.8%	96.1%	86.0%	64.4%
Goodwill & Intangibles % Shareholders' Equity (ex AOCI)	51.9%	55.9%	46.0%	44.2%	41.0%
Shareholders' Equity % Total Assets	3.8%	2.5%	7.5%	8.6%	8.8%
Return on Average Capital (ROC) (ex AOCI)	4.9%	4.8%	7.6%	-4.1%	5.5%
Sharpe Ratio of ROC (5 yr.) (ex AOCI)	82.2%	85.9%	87.6%	86.8%	891.3%
Financial Leverage (ex AOCI)	16.5%	19.2%	17.1%	18.8%	14.2%
Total Leverage (ex AOCI)	19.3%	20.6%	18.8%	20.6%	16.0%
Earnings Coverage	7.0x	8.1x	11.3x	-6.3x	8.2x
Cash Flow Coverage	7.2x	18.0x	12.0x	19.7x	22.3x
Net Unrealized Gain(Loss) % Shareholders' Equity	-50.0%	-112.0%	19.9%	27.8%	0.0%

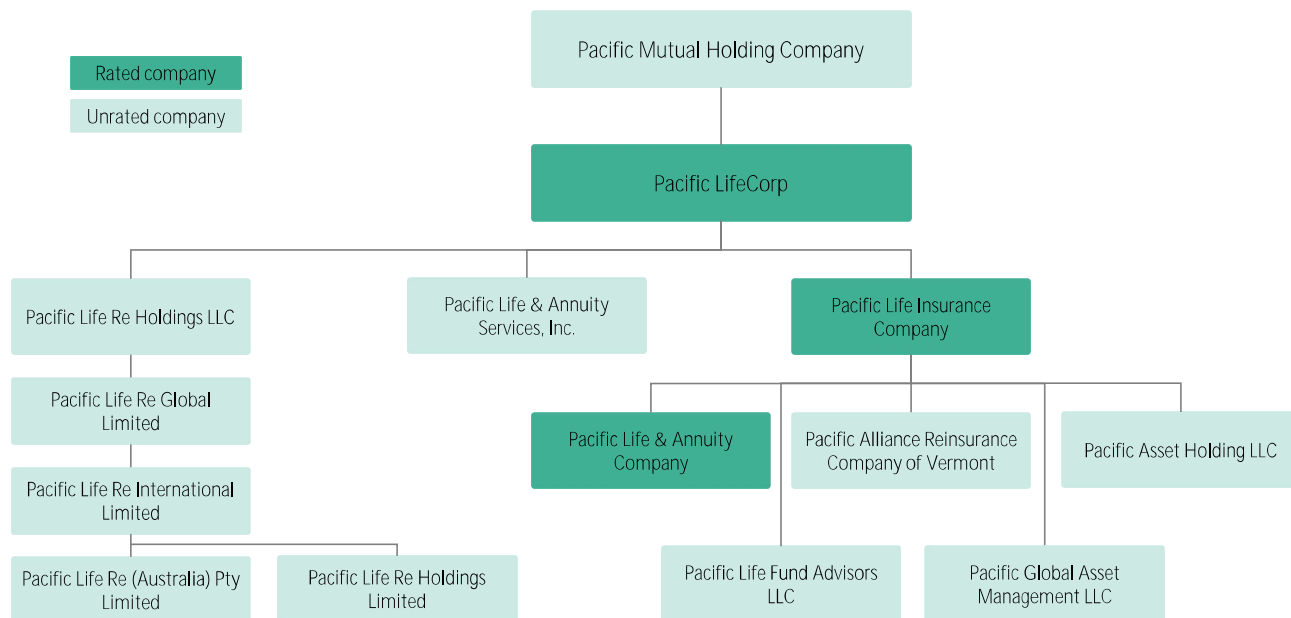
[1] Information based on US GAAP financial statements as of the fiscal year ended 31 December. [2] Certain items may have been relabeled and/or reclassified for global consistency. Source: Company filings and Moody's Ratings

Profile

Pacific Life Insurance Company and Pacific Life & Annuity Company are the primary operating subsidiaries of Pacific LifeCorp. Pacific Life Re Global Ltd. is also a subsidiary of Pacific LifeCorp. These insurance subsidiaries provide life insurance, individual annuities, pension risk transfer, structured settlements, mutual funds, life reinsurance and retrocession products. They serve individuals, businesses, and pension plans with a variety of investment products and services.

Exhibit 3

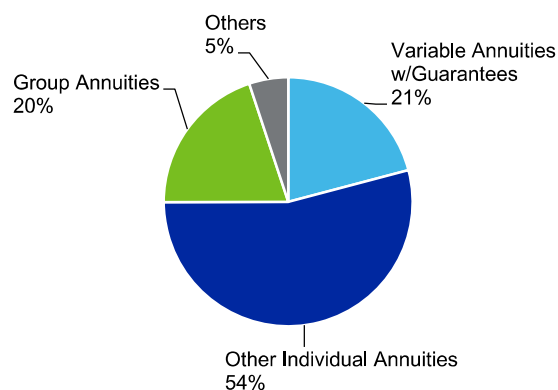
Corporate structure as of December 31, 2023



Source: Schedule Y statutory statements, Moody's Ratings research

Exhibit 4

Statutory revenues by segment shows a diversified business profile for full-year 2023



Excludes negative \$6.1 billion of Individual Life revenues attributable to a third-party reinsurance transaction
 Source: Company statutory statements

Detailed credit considerations

Moody's rates Pacific Life Aa3 for insurance financial strength, which is in line with the adjusted scorecard-indicated outcome.

Insurance financial strength

The key factors currently influencing the rating and outlook are:

Market position and brand: Focus on the high-end life insurance and recent product expansions to grow market share

Moody's views Pacific Life's market position and brand as being very strong. The A-adjusted score for the company's market position, which is in line with the unadjusted scorecard result, is supported by a strong, focused position in the high-end life insurance market serving the very affluent and businesses. The company holds an often-leading market share in most of the products it sells, including individual life insurance, structured settlements, and annuities. Within its US individual life business, Pacific Life is a top 5 provider of universal life insurance, which includes indexed universal life and variable universal life and within annuities, it holds a top 10 ranking, according to LIMRA. The company, like many of its peers, has benefited from higher interest rates which has driven its annuity sales growth, especially retail fixed annuities. The adjusted rating for this factor also reflects Pacific Life's market position internationally, including the UK and Ireland, where it sells life protection and longevity type products and in Australia and Asia, where they market protection and critical illness products.

Distribution: Primarily independent distribution network, but strong relationships with core partners

Pacific Life relies primarily upon a wide variety of third parties such as independent agents, financial advisors, banks and registered representatives for its insurance product distribution. As a result, the company maintains less direct control over its distribution and could see relatively lower persistency and more volatile sales for its third-party sold products than those companies with more control over their distribution systems. However, it benefits from a strong market breadth in most major channels other than career agents, resulting in an A score for diversity of distribution. The company has had long-standing relationships with many key independent distributors, and a reputation for excellent customer service that benefits the company in the market, increasing its sustainability in the independent channels. We have therefore left this factor unchanged, which is the same as the unadjusted scorecard result of A.

Product focus and diversification: Measured approach to diversification reduces overall product risk

Pacific Life has a very diverse set of product offerings in life and annuity markets, including fixed and variable products, as well as institutionally oriented products. The product diversification also benefits from Pacific Life Re, its international, reinsurance and life retrocession operations. In the US, Pacific Life is particularly strong in serving the high net worth life insurance market and benefits from very strong persistency on its products. The middle-market segment helps improve the overall product risk profile (primarily term

life insurance products) and creates opportunities to expand its customer base and cross-sell other insurance products, especially through other channels, such as BGAs and direct marketers.

We also believe Pacific Life benefits from a good balance between fixed and variable products, a partial result of its emphasis on risk management and diversification - including growing its institutional business, which has very little sensitivity to equity markets. Since virtually all of the life insurance business is of the nonparticipating variety, which limits its ability to share adverse experience with its policyholders and restricts upward movement for this rating factor, Moody's views Pacific Life's product focus and diversification score to be in-line with the unadjusted score and hence left this factor score unchanged at A.

Asset Quality: Good quality investment portfolio, although high exposure to certain assets, such as mortgage loans and Baa-rated bonds

Pacific Life's general account investment portfolio is diversified and consists primarily of fixed-income securities and commercial mortgages (14% of cash and invested assets). As of the end of 2023, Pacific Life's ratio of high-risk assets as a percentage of shareholders' equity (ex AOCI) was 106%, consistent with a Baa sub-factor score, which primarily emanates from its holdings in below-investment grade bonds, alternative investments, and real estate. We do note that included in high-risk assets are investments related to working capital finance that are primarily investment grade and amounted to \$1.138 billion as of year-end 2023. We also note that nearly half of Pacific Life's total bonds are rated in the Baa range, which is higher than its peers and could be a source of additional losses in a downturn. In fact, under the baseline scenario, Moody's [projects](#) a global speculative grade default rate of 2.8% by May 2025. Under a moderate pessimistic scenario, it reaches 5.1% and under a severe pessimistic scenario it reaches 8.5%.

The company does hold about 15% of total investments in commercial mortgages, with 20% invested in the office sub-sector. Pacific has faced losses on its commercial mortgages in 2024, especially those tied to shopping malls in certain geographies, such as California. We will continue to see some negative pressure on this portfolio which could weaken earnings over the next 12-18 months, although we believe that it will not result in any major calls on capital and will largely be an earnings impact. Although continued deterioration in their holdings can result in a reduction in RBC ratio, its RBC ratio remains strong as of Q2 2024. At year-end 2023, goodwill and other intangibles amounted to 52% of shareholders' equity (ex AOCI), consistent with a Baa score. Looking at the numerator of the metric - we view deferred acquisition costs (DAC), which represents all of the intangibles, as higher quality than goodwill, largely because of the greater likelihood that DAC will eventually be converted into tangible equity, as profits net of DAC amortization flow through income, given the generally consistent policyholder persistency. Despite some of the pressure on asset quality, overall, we view the asset quality to be thus better than the unadjusted score and hence raise the adjusted score for this factor to the A-level.

Capital Adequacy: Very good RBC ratio, but can exhibit volatility from interest rate moves

Pacific Life has very good capital adequacy despite a modest score of 3.8% for shareholders' equity as a percentage of total assets as of year-end 2023, which is impacted by its negative AOCI balance resulting from the rise in interest rates. To assess the capital adequacy of US life insurers' we consider the RBC ratio to be a more reliable measure of capital adequacy. Pacific Life's RBC ratio is strong at 508% as of year-end 2023. It is our expectation that the company will continue to maintain strong RBC ratios going forward, including generating organic capital, which provides a cushion against tail risk events and is a key factor supporting Pacific Life current ratings. We do note that although Pacific Life has taken prudent risk management steps to protect capital in times of stress, its RBC ratio may exhibit some volatility in response to capital market movements, especially from interest rates movements and elevated volatility - although the company has added incremental hedges to protect against this volatility in recent years. As a result, we believe that Pacific Life is best positioned in the Aa range on this factor, given its very good level of reported capital and RBC ratio, somewhat offset by its sensitivity to capital market changes.

Profitability: Diversified earnings, but sensitivity to capital market movements

Moody's views Pacific Life's profitability to be good and benefits from increasing diversification. As of year-end 2023, the company reported very good profitability with a return on average capital (ex AOCI) ratio of 4.9%, which benefitted from a higher net profit in the year. Net income rose in 2023 compared to 2022 as a result of greater net investment income from fixed income maturities and good business growth. Earnings still remain sensitive to equity market movement, particularly in the annuity business, but they are incrementally less so than in the past, particularly as the company implemented newer hedging strategies in recent years and as the

older block of guarantees shrinks as newer, more diversified business comes onto the balance sheet. Although we expect the mortality impact to continue to improve in 2024 (as the pandemic is now endemic), the elevated market volatility can lower fee income and impact certain businesses, such as annuities, whose earnings are sensitive to capital markets. Despite that, we have adjusted the score on this factor up to A from the unadjusted scorecard result of Baa, because we believe Pacific Life is well positioned to navigate the market volatility from a risk management and capital perspective.

Liquidity and Asset/Liability Management (ALM): Generally stable liability profile, but VA adds ALM risk

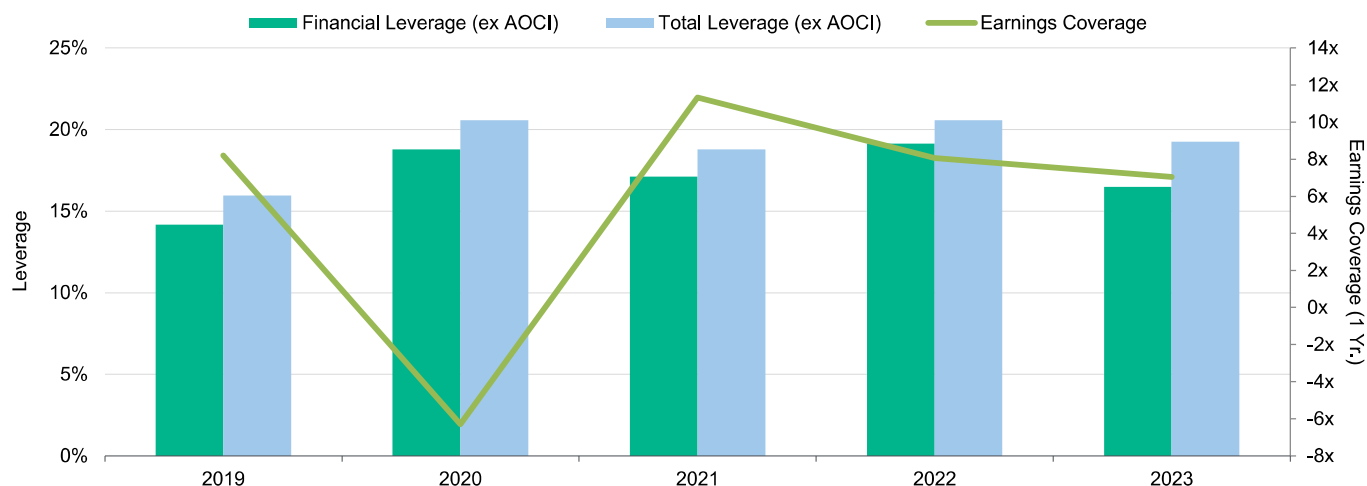
Moody's believes that Pacific Life has excellent liquidity to meet its near-term policyholder obligations based on the unadjusted scorecard metric, and this is supported by a stable liability profile of life insurance business. While the company historically has faced some challenges from the low interest rate environment, especially in long duration lines such as structured settlements, newer structured settlement sales have been focused on shorter duration products which somewhat minimizes these challenges. Moody's believes the company has ample liquidity to manage through a stressful liquidity scenario.

On ALM, appropriately managing the risks from a book of VAs containing embedded guarantees is a challenging task at best and requires the company to employ a hedging program to mitigate any market disruptions. These factors make interest rate and equity hedging more relevant, and make the company's ALM more challenging, and support a downward adjustment for the factor score to A from the unadjusted result of Aa.

Financial Flexibility: Good financial flexibility driven by strong cash flow coverage

Exhibit 5

Leverage improves as a result of lower debt and rising shareholders' equity; coverage metrics remain healthy



Source: Company filings and Moody's Ratings

Pacific Life's adjusted financial leverage (ex AOCI) and total leverage (ex AOCI) at year-end 2023 were 16.5% and 19.3%, respectively, which is in-line with our expectations of a Aa company. Earnings coverage, which has historically been very strong, declined to 7x in 2023 driven by higher interest expense in the year. We expect Pacific Life to continue to remain under 20% adjusted financial leverage in the future and continue to report strong coverage metrics. Given the company is organized in a mutual holding company structure, we believe that raising external equity is not a realistic alternative for the company. However, we still believe that an Aa rating for this factor is appropriate given the modest financial leverage and generally strong cash flow coverage ratios as discussed above. As a result, we have left the adjusted score to be at the same level as the unadjusted score.

Liquidity analysis

Pacific Life Insurance Company has a \$1 billion commercial paper program with no commercial paper outstanding as of December 31, 2023.

In June 2021, Pacific Life amended and extended two existing revolving credit facilities for Pacific LifeCorp and Pacific Life Insurance Company into a single unified \$1 billion five year co-borrowed revolving credit facility (RCF) maturing June 2026. The unified RCF replaced standalone five-year revolving credit facilities of \$600 million and \$400 million for Pacific LifeCorp and Pacific Life Insurance Company, respectively. There were no amounts outstanding as of December 31, 2023 and the facilities contain no material adverse change clauses.

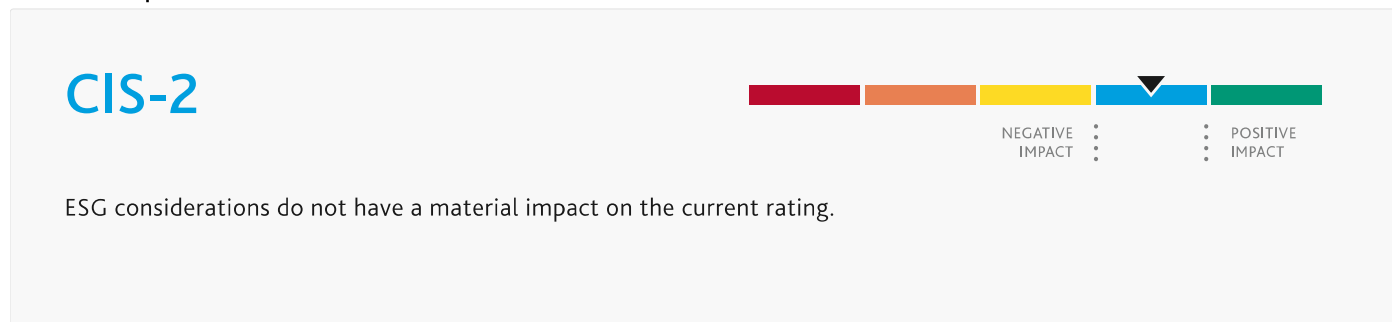
As of December 31, 2023, the company held approximately \$761 million in cash and liquid investments at the holding company. Pacific Life's statutory dividend capacity in 2023 is \$746 million without requiring special regulatory approval. Total cash needs at the holding company in 2022 include \$103 million of interest expense. The company has \$567 million in senior notes coming due in 2033 and then no further maturities until 2039.

ESG considerations

Pacific Mutual Holding Company's ESG credit impact score is CIS-2

Exhibit 6

ESG credit impact score



Source: Moody's Ratings

Pacific Mutual's ESG Credit Impact Score indicates that ESG considerations do not have a material impact on the credit rating.

Exhibit 7

ESG issuer profile scores



Source: Moody's Ratings

Environmental

Pacific Mutual has moderate exposure to carbon transition risk through the long-duration assets held in its investment portfolio and inherent asset leverage, while emerging stakeholder focus on environmental stewardship in its investment portfolio gives rise to strategic and reputational risk. This risk is mitigated by Pacific Life's strong governance and risk management practices, along with its developing focus on managing climate risk.

Social

Pacific Mutual faces high industrywide customer relations risk in relation to its sale of products and significant interaction with retail customers against a background of regulatory focus on the fair treatment of customers, which is mitigated by well-developed policies and procedures. High cyber and personal data risks, amplified by increasing digital product distribution, are mitigated by a strong technology framework. High exposure to demographic and societal risks can make the operating environment more difficult; however, an aging population supports the demand for the firm's longevity products.

Governance

As a mutual holding company, Pacific Mutual's interests are strongly aligned with those of policyholder/owners as the management team does not deviate from its core policyowner-oriented principles. The insurer has strong governance practices, risk management and internal controls. It also benefits from a seasoned and stable management team with a successful track record.

ESG Issuer Profile Scores and Credit Impact Scores for the rated entity/transaction are available on Moodys.com. In order to view the latest scores, please click [here](#) to go to the landing page for the entity/transaction on MDC and view the ESG Scores section.

Support and structural considerations

The notching between Pacific LifeCorp's A3 senior unsecured debt rating and the Aa3 insurance financial strength rating of its operating subsidiaries is three notches, which is typical notching practice for US insurance holding company structures.

Rating methodology and scorecard factors

Exhibit 8

Rating Factors

Financial Strength Rating Scorecard [1][2]	Aaa	Aa	A	Baa	Ba	B	Caa	ScoreAdj	Score
Business Profile								A	A
Market Position and Brand (15%)								A	A
-Relative Market Share Ratio			X						
Distribution (10%)								A	A
-Distribution Control			X						
-Diversity of Distribution			X						
Product Focus and Diversification (10%)								A	A
-Product Risk			X						
-Life Insurance Product Diversification			X						
Financial Profile								A	Aa
Asset Quality (10%)								Baa	A
-High Risk Assets % Shareholders' Equity ex AOCI				106.3%					
-Goodwill & Intangibles % Shareholders' Equity ex AOCI				51.9%					
Capital Adequacy (15%)								Ba	Aa
-Shareholders' Equity % Total Assets					3.8%				
Profitability (15%)								Baa	A
-Return on Capital (5 yr. avg.) ex AOCI					3.7%				
-Sharpe Ratio of ROC (5 yr.) ex AOCI						82.2%			
Liquidity and Asset/Liability Management (10%)								Aa	A
-Liquid Assets % Liquid Liabilities		X							
Financial Flexibility (15%)								Aa	Aa
-Financial Leverage ex AOCI		16.5%							
-Total Leverage ex AOCI		19.3%							
-Earnings Coverage (5 yr. avg.)			5.7x						
-Cash Flow Coverage (5 yr. avg.)	15.8x								
Operating Environment								Aaa - A	Aaa - A
Preliminary Standalone Outcome								A3	Aa3

[1] Information based on US GAAP financial statements as of fiscal year ended December 31, 2023. [2] The Scorecard rating is an important component of the company's published rating, reflecting the standalone financial strength before other considerations (discussed above) are incorporated into the analysis.

Source: Moody's Ratings

Ratings

Exhibit 9

Category	Moody's Rating
PACIFIC LIFECORP	
Rating Outlook	STA
Senior Unsecured	A3
PACIFIC LIFE INSURANCE COMPANY	
Rating Outlook	STA
Insurance Financial Strength	Aa3
ST Insurance Financial Strength	P-1
Surplus Notes	A2 (hyb)
Commercial Paper	P-1
PACIFIC LIFE & ANNUITY COMPANY	
Rating Outlook	STA
Insurance Financial Strength	Aa3
PACIFIC LIFE GLOBAL FUNDING II	
Rating Outlook	STA
Senior Secured	Aa3

Source: Moody's Ratings

© 2024 Moody's Corporation, Moody's Investors Service, Inc., Moody's Analytics, Inc. and/or their licensors and affiliates (collectively, "MOODY'S"). All rights reserved.

CREDIT RATINGS ISSUED BY MOODY'S CREDIT RATINGS AFFILIATES ARE THEIR CURRENT OPINIONS OF THE RELATIVE FUTURE CREDIT RISK OF ENTITIES, CREDIT COMMITMENTS, OR DEBT OR DEBT-LIKE SECURITIES, AND MATERIALS, PRODUCTS, SERVICES AND INFORMATION PUBLISHED OR OTHERWISE MADE AVAILABLE BY MOODY'S (COLLECTIVELY, "MATERIALS") MAY INCLUDE SUCH CURRENT OPINIONS. MOODY'S DEFINES CREDIT RISK AS THE RISK THAT AN ENTITY MAY NOT MEET ITS CONTRACTUAL FINANCIAL OBLIGATIONS AS THEY COME DUE AND ANY ESTIMATED FINANCIAL LOSS IN THE EVENT OF DEFAULT OR IMPAIRMENT. SEE APPLICABLE MOODY'S RATING SYMBOLS AND DEFINITIONS PUBLICATION FOR INFORMATION ON THE TYPES OF CONTRACTUAL FINANCIAL OBLIGATIONS ADDRESSED BY MOODY'S CREDIT RATINGS. CREDIT RATINGS DO NOT ADDRESS ANY OTHER RISK, INCLUDING BUT NOT LIMITED TO: LIQUIDITY RISK, MARKET VALUE RISK, OR PRICE VOLATILITY. CREDIT RATINGS, NON-CREDIT ASSESSMENTS ("ASSESSMENTS"), AND OTHER OPINIONS INCLUDED IN MOODY'S MATERIALS ARE NOT STATEMENTS OF CURRENT OR HISTORICAL FACT. MOODY'S MATERIALS MAY ALSO INCLUDE QUANTITATIVE MODEL-BASED ESTIMATES OF CREDIT RISK AND RELATED OPINIONS OR COMMENTARY PUBLISHED BY MOODY'S ANALYTICS, INC. AND/OR ITS AFFILIATES. MOODY'S CREDIT RATINGS, ASSESSMENTS, OTHER OPINIONS AND MATERIALS DO NOT CONSTITUTE OR PROVIDE INVESTMENT OR FINANCIAL ADVICE, AND MOODY'S CREDIT RATINGS, ASSESSMENTS, OTHER OPINIONS AND MATERIALS ARE NOT AND DO NOT PROVIDE RECOMMENDATIONS TO PURCHASE, SELL, OR HOLD PARTICULAR SECURITIES. MOODY'S CREDIT RATINGS, ASSESSMENTS, OTHER OPINIONS AND MATERIALS DO NOT COMMENT ON THE SUITABILITY OF AN INVESTMENT FOR ANY PARTICULAR INVESTOR. MOODY'S ISSUES ITS CREDIT RATINGS, ASSESSMENTS AND OTHER OPINIONS AND PUBLISHES OR OTHERWISE MAKES AVAILABLE ITS MATERIALS WITH THE EXPECTATION AND UNDERSTANDING THAT EACH INVESTOR WILL, WITH DUE CARE, MAKE ITS OWN STUDY AND EVALUATION OF EACH SECURITY THAT IS UNDER CONSIDERATION FOR PURCHASE, HOLDING, OR SALE.

MOODY'S CREDIT RATINGS, ASSESSMENTS, OTHER OPINIONS, AND MATERIALS ARE NOT INTENDED FOR USE BY RETAIL INVESTORS AND IT WOULD BE RECKLESS AND INAPPROPRIATE FOR RETAIL INVESTORS TO USE MOODY'S CREDIT RATINGS, ASSESSMENTS, OTHER OPINIONS OR MATERIALS WHEN MAKING AN INVESTMENT DECISION. IF IN DOUBT YOU SHOULD CONTACT YOUR FINANCIAL OR OTHER PROFESSIONAL ADVISER.

ALL INFORMATION CONTAINED HEREIN IS PROTECTED BY LAW, INCLUDING BUT NOT LIMITED TO, COPYRIGHT LAW, AND NONE OF SUCH INFORMATION MAY BE COPIED OR OTHERWISE REPRODUCED, REPACKAGED, FURTHER TRANSMITTED, TRANSFERRED, DISSEMINATED, REDISTRIBUTED OR RESOLD, OR STORED FOR SUBSEQUENT USE FOR ANY SUCH PURPOSE, IN WHOLE OR IN PART, IN ANY FORM OR MANNER OR BY ANY MEANS WHATSOEVER, BY ANY PERSON WITHOUT MOODY'S PRIOR WRITTEN CONSENT. FOR CLARITY, NO INFORMATION CONTAINED HEREIN MAY BE USED TO DEVELOP, IMPROVE, TRAIN OR RETRAIN ANY SOFTWARE PROGRAM OR DATABASE, INCLUDING, BUT NOT LIMITED TO, FOR ANY ARTIFICIAL INTELLIGENCE, MACHINE LEARNING OR NATURAL LANGUAGE PROCESSING SOFTWARE, ALGORITHM, METHODOLOGY AND/OR MODEL.

MOODY'S CREDIT RATINGS, ASSESSMENTS, OTHER OPINIONS AND MATERIALS ARE NOT INTENDED FOR USE BY ANY PERSON AS A BENCHMARK AS THAT TERM IS DEFINED FOR REGULATORY PURPOSES AND MUST NOT BE USED IN ANY WAY THAT COULD RESULT IN THEM BEING CONSIDERED A BENCHMARK.

All information contained herein is obtained by MOODY'S from sources believed by it to be accurate and reliable. Because of the possibility of human or mechanical error as well as other factors, however, all information contained herein is provided "AS IS" without warranty of any kind. MOODY'S adopts all necessary measures so that the information it uses in assigning a credit rating is of sufficient quality and from sources MOODY'S considers to be reliable including, when appropriate, independent third-party sources. However, MOODY'S is not an auditor and cannot in every instance independently verify or validate information received in the credit rating process or in preparing its Materials.

To the extent permitted by law, MOODY'S and its directors, officers, employees, agents, representatives, licensors and suppliers disclaim liability to any person or entity for any indirect, special, consequential, or incidental losses or damages whatsoever arising from or in connection with the information contained herein or the use of or inability to use any such information, even if MOODY'S or any of its directors, officers, employees, agents, representatives, licensors or suppliers is advised in advance of the possibility of such losses or damages, including but not limited to: (a) any loss of present or prospective profits or (b) any loss or damage arising where the relevant financial instrument is not the subject of a particular credit rating assigned by MOODY'S.

To the extent permitted by law, MOODY'S and its directors, officers, employees, agents, representatives, licensors and suppliers disclaim liability for any direct or compensatory losses or damages caused to any person or entity, including but not limited to by any negligence (but excluding fraud, willful misconduct or any other type of liability that, for the avoidance of doubt, by law cannot be excluded) on the part of, or any contingency within or beyond the control of, MOODY'S or any of its directors, officers, employees, agents, representatives, licensors or suppliers, arising from or in connection with the information contained herein or the use of or inability to use any such information.

NO WARRANTY, EXPRESS OR IMPLIED, AS TO THE ACCURACY, TIMELINESS, COMPLETENESS, MERCHANTABILITY OR FITNESS FOR ANY PARTICULAR PURPOSE OF ANY CREDIT RATING, ASSESSMENT, OTHER OPINION OR INFORMATION IS GIVEN OR MADE BY MOODY'S IN ANY FORM OR MANNER WHATSOEVER.

Moody's Investors Service, Inc., a wholly-owned credit rating agency subsidiary of Moody's Corporation ("MCO"), hereby discloses that most issuers of debt securities (including corporate and municipal bonds, debentures, notes and commercial paper) and preferred stock rated by Moody's Investors Service, Inc. have, prior to assignment of any credit rating, agreed to pay to Moody's Investors Service, Inc. for credit ratings opinions and services rendered by it. MCO and Moody's Investors Service also maintain policies and procedures to address the independence of Moody's Investors Service credit ratings and credit rating processes. Information regarding certain affiliations that may exist between directors of MCO and rated entities, and between entities who hold credit ratings from Moody's Investors Service, Inc. and have also publicly reported to the SEC an ownership interest in MCO of more than 5%, is posted annually at www.moody's.com under the heading "Investor Relations — Corporate Governance — Charter Documents - Director and Shareholder Affiliation Policy."

Moody's SF Japan K.K., Moody's Local AR Agente de Calificación de Riesgo S.A., Moody's Local BR Agência de Classificação de Risco LTDA, Moody's Local MX S.A. de C.V., I.C.V., Moody's Local PE Clasificadora de Riesgo S.A., and Moody's Local PA Calificadora de Riesgo S.A. (collectively, the "Moody's Non-NRSRO CRAs") are all indirectly wholly-owned credit rating agency subsidiaries of MCO. None of the Moody's Non-NRSRO CRAs is a Nationally Recognized Statistical Rating Organization.

Additional terms for Australia only: Any publication into Australia of this document is pursuant to the Australian Financial Services License of MOODY'S affiliate, Moody's Investors Service Pty Limited ABN 61 003 399 657AFSL 336969 and/or Moody's Analytics Australia Pty Ltd ABN 94 105 136 972 AFSL 383569 (as applicable). This document is intended to be provided only to "wholesale clients" within the meaning of section 761G of the Corporations Act 2001. By continuing to access this document from within Australia, you represent to MOODY'S that you are, or are accessing the document as a representative of, a "wholesale client" and that neither you nor the entity you represent will directly or indirectly disseminate this document or its contents to "retail clients" within the meaning of section 761G of the Corporations Act 2001. MOODY'S credit rating is an opinion as to the creditworthiness of a debt obligation of the issuer, not on the equity securities of the issuer or any form of security that is available to retail investors.

Additional terms for India only: Moody's credit ratings, Assessments, other opinions and Materials are not intended to be and shall not be relied upon or used by any users located in India in relation to securities listed or proposed to be listed on Indian stock exchanges.

Additional terms with respect to Second Party Opinions (as defined in Moody's Investors Service Rating Symbols and Definitions): Please note that a Second Party Opinion ("SPO") is not a "credit rating". The issuance of SPOs is not a regulated activity in many jurisdictions, including Singapore. JAPAN: In Japan, development and provision of SPOs fall under the category of "Ancillary Businesses", not "Credit Rating Business", and are not subject to the regulations applicable to "Credit Rating Business" under the Financial Instruments and Exchange Act of Japan and its relevant regulation. PRC: Any SPO: (1) does not constitute a PRC Green Bond Assessment as defined under any relevant PRC laws or regulations; (2) cannot be included in any registration statement, offering circular, prospectus or any other documents submitted to the PRC regulatory authorities or otherwise used to satisfy any PRC regulatory disclosure requirement; and (3) cannot be used within the PRC for any regulatory purpose or for any other purpose which is not permitted under relevant PRC laws or regulations. For the purposes of this disclaimer, "PRC" refers to the mainland of the People's Republic of China, excluding Hong Kong, Macau and Taiwan.